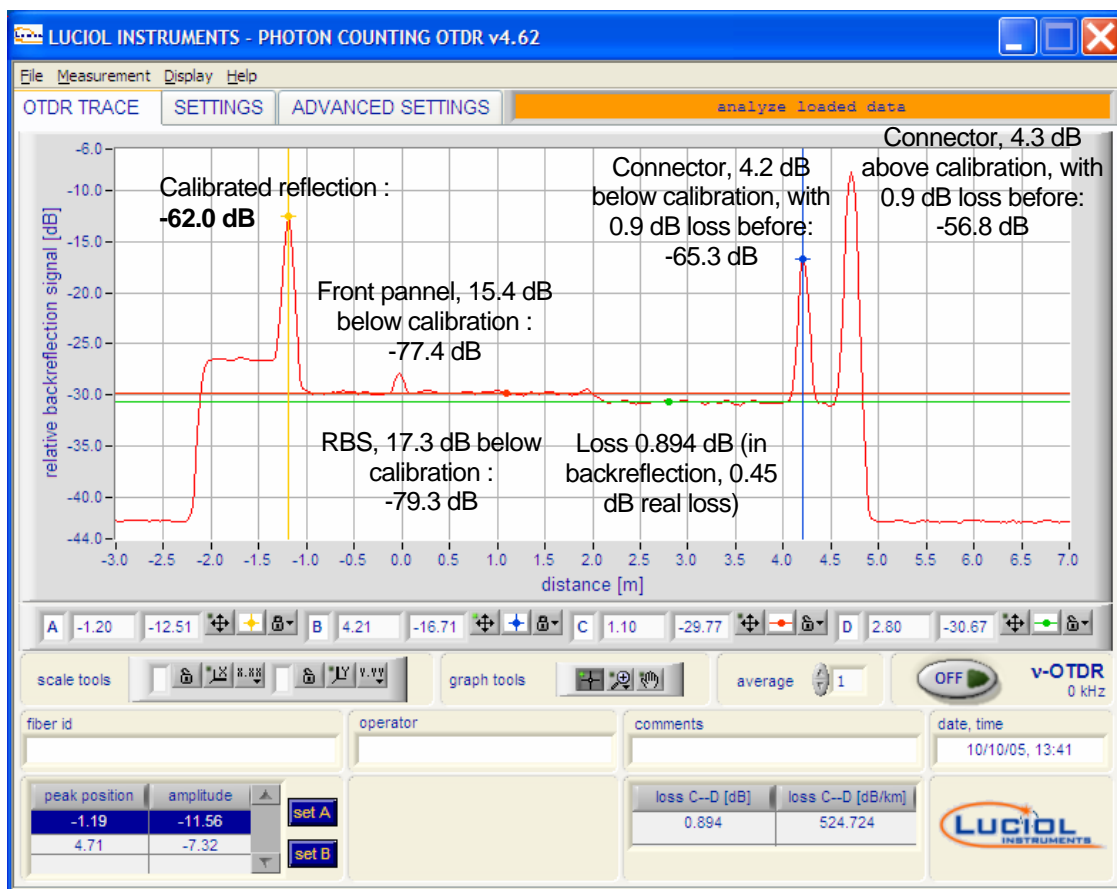


v-OTDR - High resolution OTDR

Application note 6: calibrated internal reflection for v-OTDR SMF

The most recent v-OTDRs have an internal calibrated reflection, which enables to measure directly the value of reflections and RBS on the trace. In the following example, the internal reflection is at -1.2 m, with value: -62.0 ± 1 dB (in backreflection mode). The value of the internal reflection for each particular unit, and at each wavelength, is given in the Test Results sheet, attached. It can be used to calibrate other reflections, as seen on the following trace:



Note that the value of a backreflection is always given as a function of the local power. The value of the calibrated reflection is given at 0 m, so any loss in the FUT has to be taken into account in the measurement of further reflections. For example, the reflection at 4.2 m, is 4.2 dB below the calibrated reflection, but there is a 0.9 dB loss between. The value of the reflection is therefore: $-62.0 - 4.2 + 0.9 = -65.3$ dB.

<p>SUNRISE LUCIOL SàRL 7b Route Suisse CH 1295 MIES Switzerland</p>	<p>Tel : (+41).22.755.56.50 Fax : (+41).22.755.56.67 Email: info@luciol.com On the web: www.luciol.com</p>
-------------------------------------------------------------------------------------------------------------------	---------------------------------------------------------------------------------------------------------------------------------------------------